



70 Horseferry Road, Westminster
London SW1P

GARTONJONES.COM



70 Horseferry Road, Westminster
London, SW1P

GARTON JONES.COM

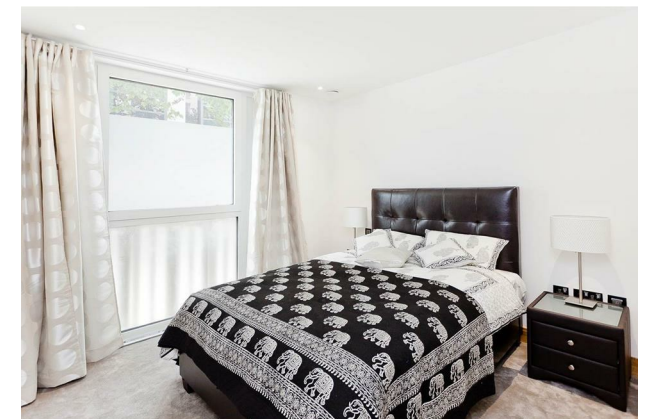
49 Marsham Street Sales +44 (0) 20 7340 0480
London westminster@gartonjones.com
SW1P 3DP www.gartonjones.com

£1,125,000 Leasehold

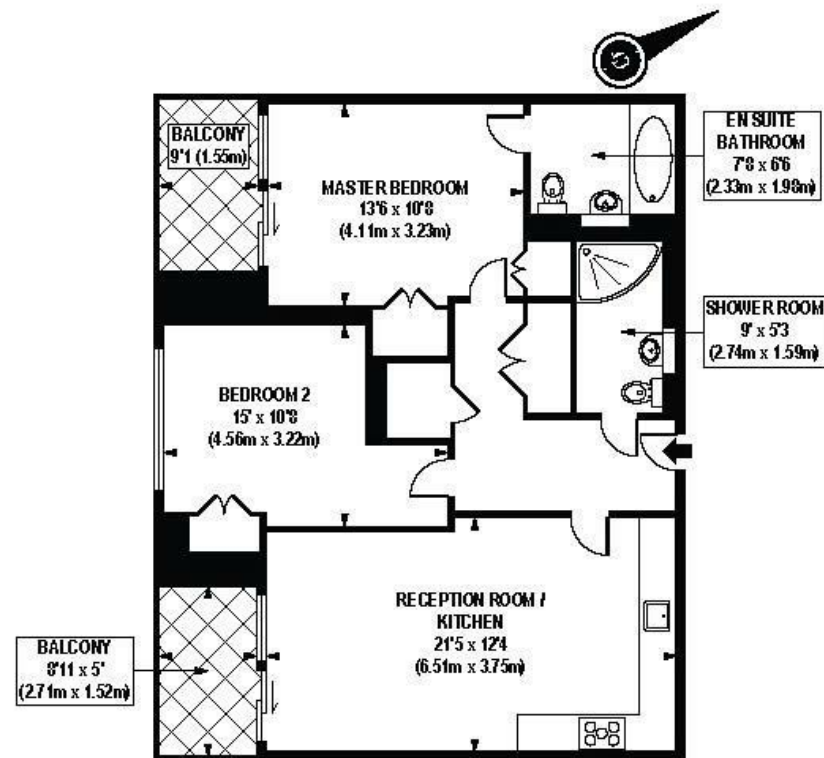
We are delighted to offer for sale this 2 bedroom apartment offered with secure underground parking positioned only moments from the River Thames. The living space comprises of a dual aspect open plan reception room with a smart fitted kitchen with Miele appliances, fitted wardrobes to both bedrooms, 2 luxury bathrooms (1 en-suite), good storage and balcony. Residents will benefit from an array of amenities including a 24 hour concierge, a fully equipped fitness suite and access to an attractive landscaped courtyard garden with water feature. The Courthouse is fortunate to be in a superb Westminster location, being only 10 minutes from St James' Park and Westminster tube stations, as well as only a short walk to Victoria station. The Courthouse also benefits from a close proximity to attractions such as St James' Park, Westminster Abbey, Big Ben and universities such as LSE and King's College.

Long Leasehold: 999 Years From 2014
Ground Rent: £500 Per Annum
Service Charges: £3,900 (Half Yearly)
Council Tax Band F (London Borough of Westminster)
EPC B (81)

- 2 Bedroom Apartment
- Dual Aspect Open Plan Reception Room
- Contemporary Kitchen
- 2 Modern Bathrooms (En-Suite)
- Balcony
- Secure Parking
- 24 Hour Concierge
- Residents Fitness Suite & Landscaped Communal Gardens
- Close To Local Shops, Restaurants and St James's Park, Westminster & Victoria Transport Links



EPC certificate available on request.



GROUND FLOOR

APPROX. GROSS INTERNAL FLOOR AREA 796 sq. ft / 73.82 sq. m

